



Procon Engineering Ltd

(Incorporating: Defiant - Negretti - Inflo - Lintvalve)



PROCESS CONTROL

... system integration solutions

Our Pedigree

Procon Engineering Limited is a leading manufacturer and supplier of turnkey solutions for Process Control and Weighing Systems. The company incorporates the well-established names of *Defiant*, *Negretti*, *Inflo Belt Weighers* and *Lintvalve Boiler Leak Detection Systems*.

We have experience across a broad spectrum of industries, especially in food and beverage, pharmaceutical, chemical, toiletries, mineral, general engineering, building materials, nuclear and utilities.



Our skill set includes:

- System Feasibility Studies and Design
- Project Management
- Process Evaluation and System Optimisation
- Mechanical and Electrical Engineering
- Service and System Maintenance
- Panel Building
- Digital and Analogue Electronics
- Application and System Software
- Hazardous Area Systems

We are an ISO9001:2000 accredited company, and have Quality and Health and Safety approvals from institutions such as Lloyds Register, National Weights and Measures Laboratory, National Britannia, together with industry relevant Passport Schemes.

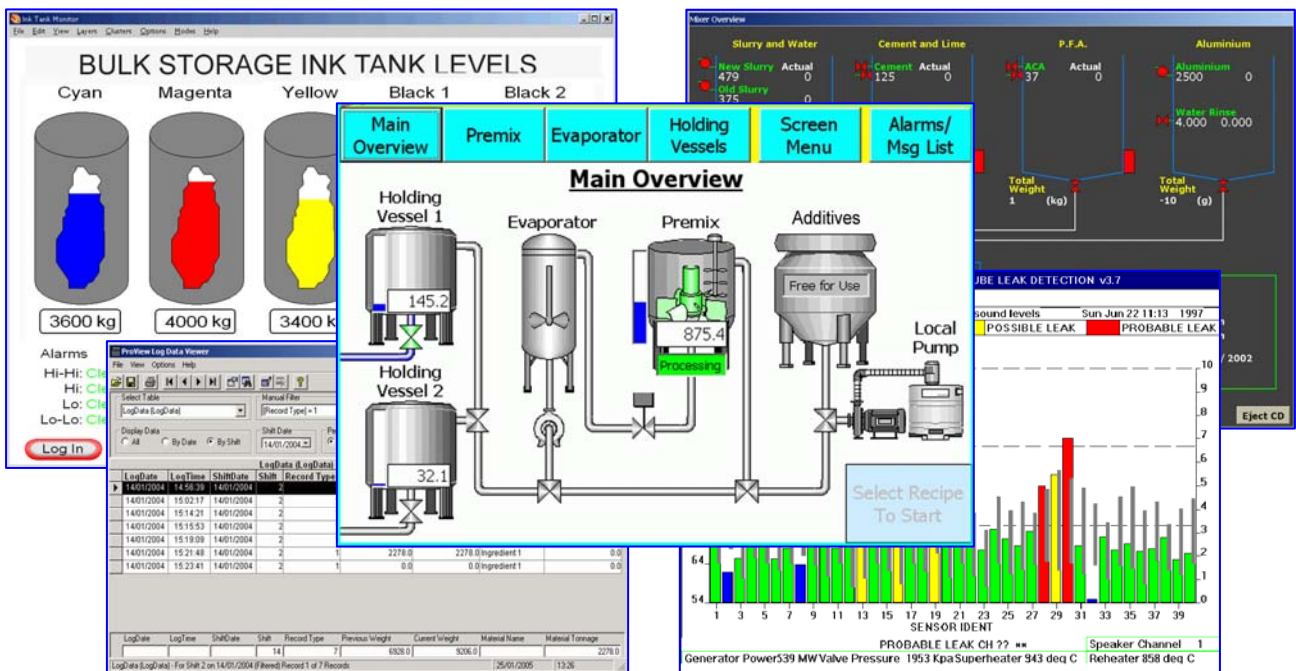
Panel Building

Electrical, electronic and pneumatic control panels, including MCC and multibay units, are built in-house specifically for each project using standard components. Panels are functionally tested and fully documented.



Software Solutions

Procon provides both application and system software. Our engineers have, over many years, built an extensive in-house modular software library. Consequently, when we design customised software solutions for overall plant control, we can incorporate existing tried and tested software modules. This approach greatly increases conformity and reliability thus reducing final test and commissioning timescales for our final software.

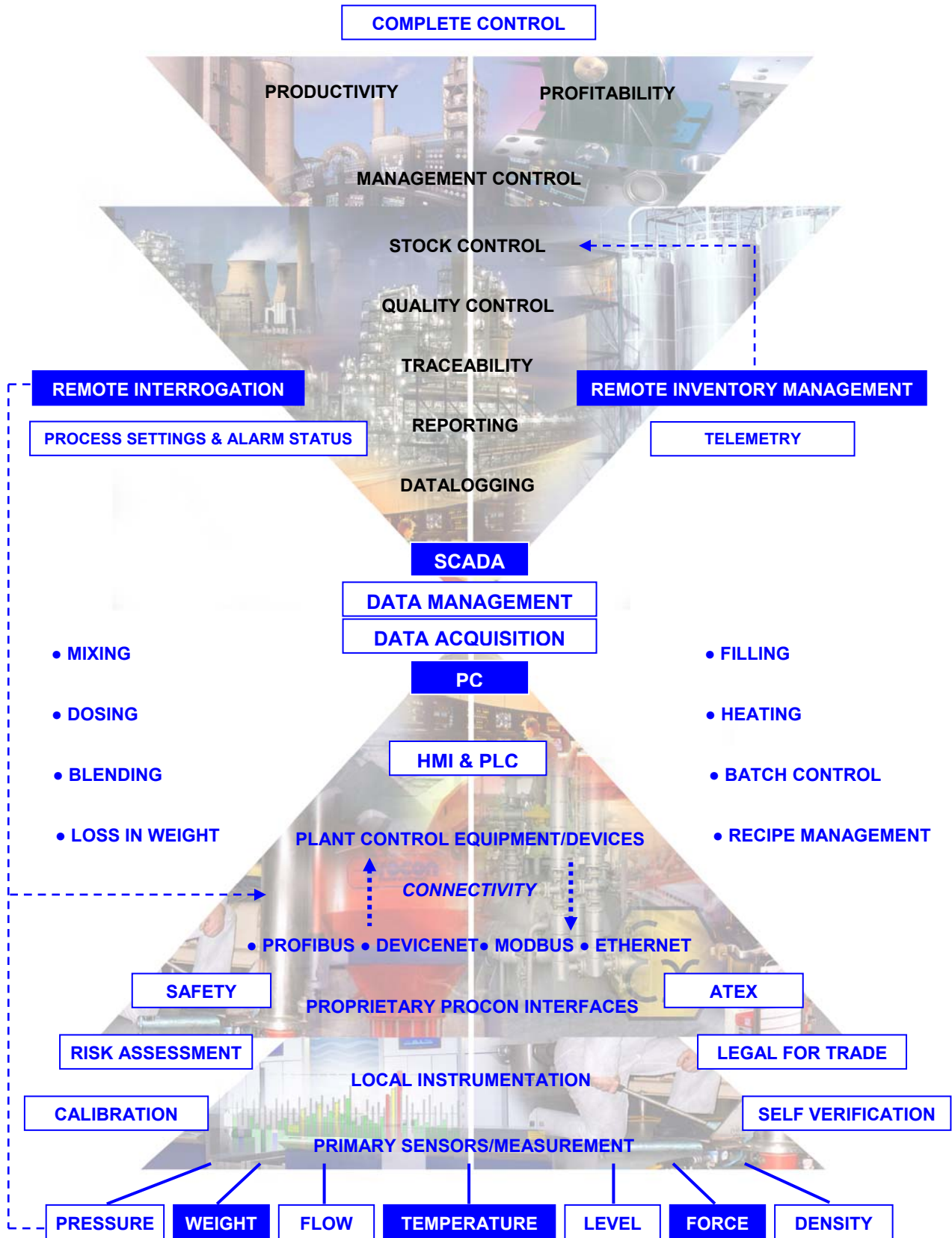


Connectivity

Our proprietary software and latest HMI interfaces give users the ideal working environment with clear graphics relating to plant status and alarm conditions. We have extensive expertise in the implementation of modern plant wide communication networks such as Industrial Ethernet, ModBus, Profibus and DeviceNet, together with seamless connections to PC systems and software packages for data-logging and generating management report data.

Scope of Supply

Procon Engineering provide fully integrated process control solutions - from the primary measurement level through modern interfaces to complete PLC, HMI, PC and SCADA systems. We offer a broad spectrum of tried and tested instrumentation, equipment and systems. These form the basic building blocks for our integrated solutions, with software and firmware forming the all important adhesive. Our approach ensures that clients receive a balanced blend of modern control and data acquisition technology, together with well engineered solutions within the process itself. The factory floor and 'upstairs' management systems become one environment, where real time data can be used to its best advantage.



Our technical and commercial solutions, which encompass both new installations and plant upgrades, are fully supported by a highly experienced installation, commissioning and service team.

Project Management

We understand how important it is to work closely with our clients from the outset of any project and, as a result, Procon Engineering is organised specifically to provide highly effective project management. As part of this process we establish the functional design specification with our customers and provide detailed project plans, milestones and reviews - all under the umbrella of our ISO9001:2000 accreditation. We take full responsibility for your system providing you with one point of contact. In many applications we work in conjunction with clients' engineering departments to ensure smooth implementation within required time frames.



Service and Support

Procon Engineering places great emphasis on after-sales service and support. We operate a comprehensive service, support, installation and commissioning facility throughout the **UK and the Rest of the World - 24 hours a day, 7 days per week**. Our contract maintenance schemes ensure your plant performance is maintained at peak potential. We support and cover our own and most other manufacturers' products and systems.



- 7-day, 24 hour Service and Support
- Service Contract Agreements
- Cost-effective Calibration Techniques
- Installation and Commissioning
- Repair, Refurbishment and Upgrades
- Remote Modem Diagnostic Support



We also offer comprehensive training, both in-house and on site, so that you can get the best from your system and process.

ATEX



SHAPA
SOLIDS HANDLING AND PROCESSING ASSOCIATION

Procon Engineering Ltd

A subsidiary of National Oilwell Inc

Registered Office
Vestry Estate
Sevenoaks
Kent TN14 5EL

Tel: 01732 781300
Fax: 01732 781311
e-mail: sales@proconeng.com
website: www.proconeng.com

Registered in England
No. 01201645